

CS37 Blast Cabinets



Product Features

The CS37 blast cabinet is an economical, mid-sized, light-duty blast cabinet with a surprisingly extensive features list. It is a robust solution for applications with limited compressed air and power supplies.

- ▶ All steel cabinet shell.
- ▶ Twin door access.
- ▶ Powder coated internal and external finish.
- ▶ Full height floor mounting legs.
- ▶ Cotton lined vinyl operating gloves.
- ▶ Cabinet mounted Control Panel.
- ▶ Pressure regulator, pressure gauge, stop/start button and indicator lights.
- ▶ Dual blasting gun system, one foot pedal operated and one trigger operated.
- ▶ Rear mounted dust collector, cartridge filter and fan assembly.
- ▶ Safety interlocks on access doors.

Common Applications

- ▶ De-scale and de-rust metal surfaces.
- ▶ Remove paint and powder coating.
- ▶ De-burr and de-flash castings and moldings.
- ▶ Decorative finishing of non-ferrous metals.
- ▶ Glass and stone etching.

Complementary Products



Delta SNH Manual Gun



Delta SNH Auto Gun



PB500HD Blast Cabinet



PB500ES Blast Cabinet



PB1000HD Blast Cabinet



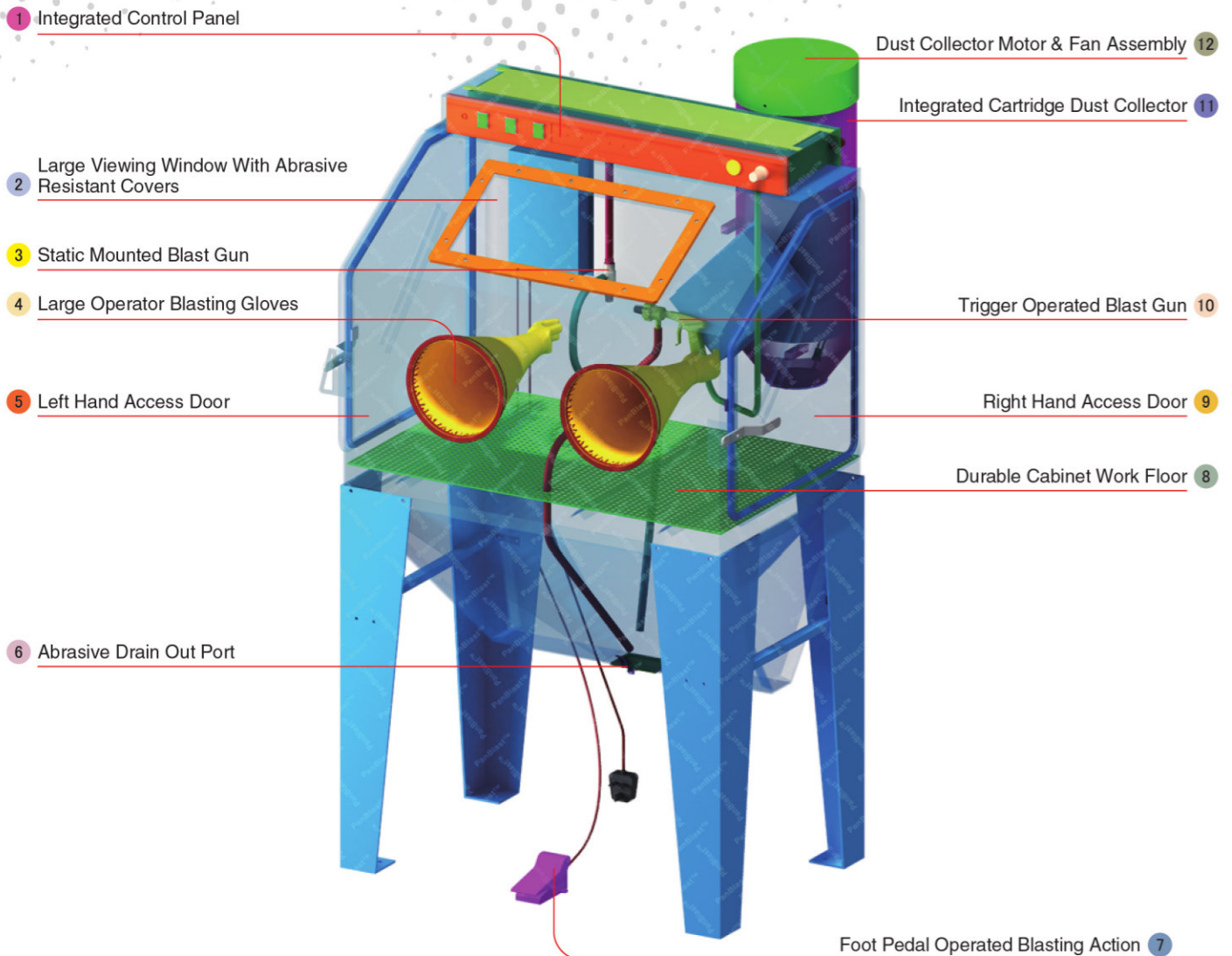
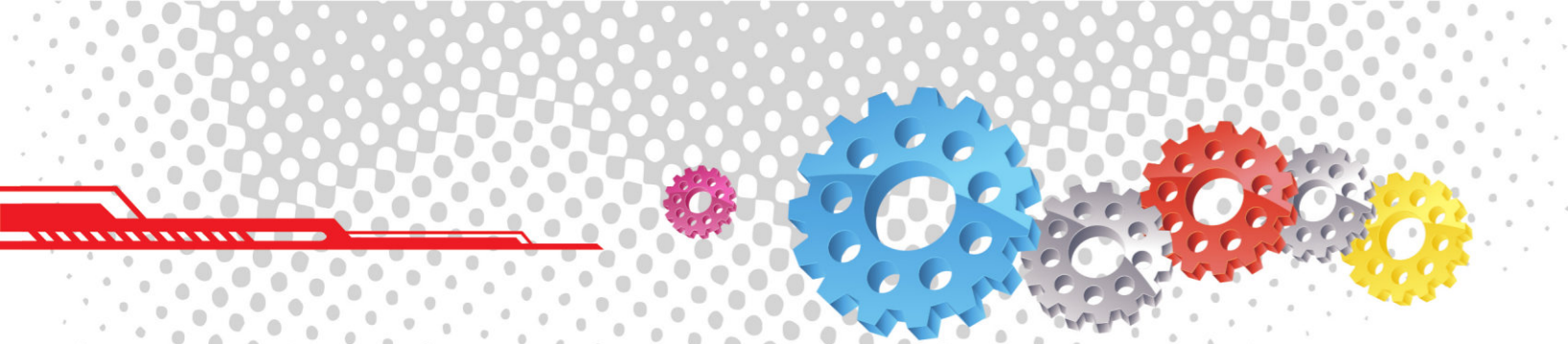
PB1000SP Blast Cabinet



PB1000P Blast Cabinet



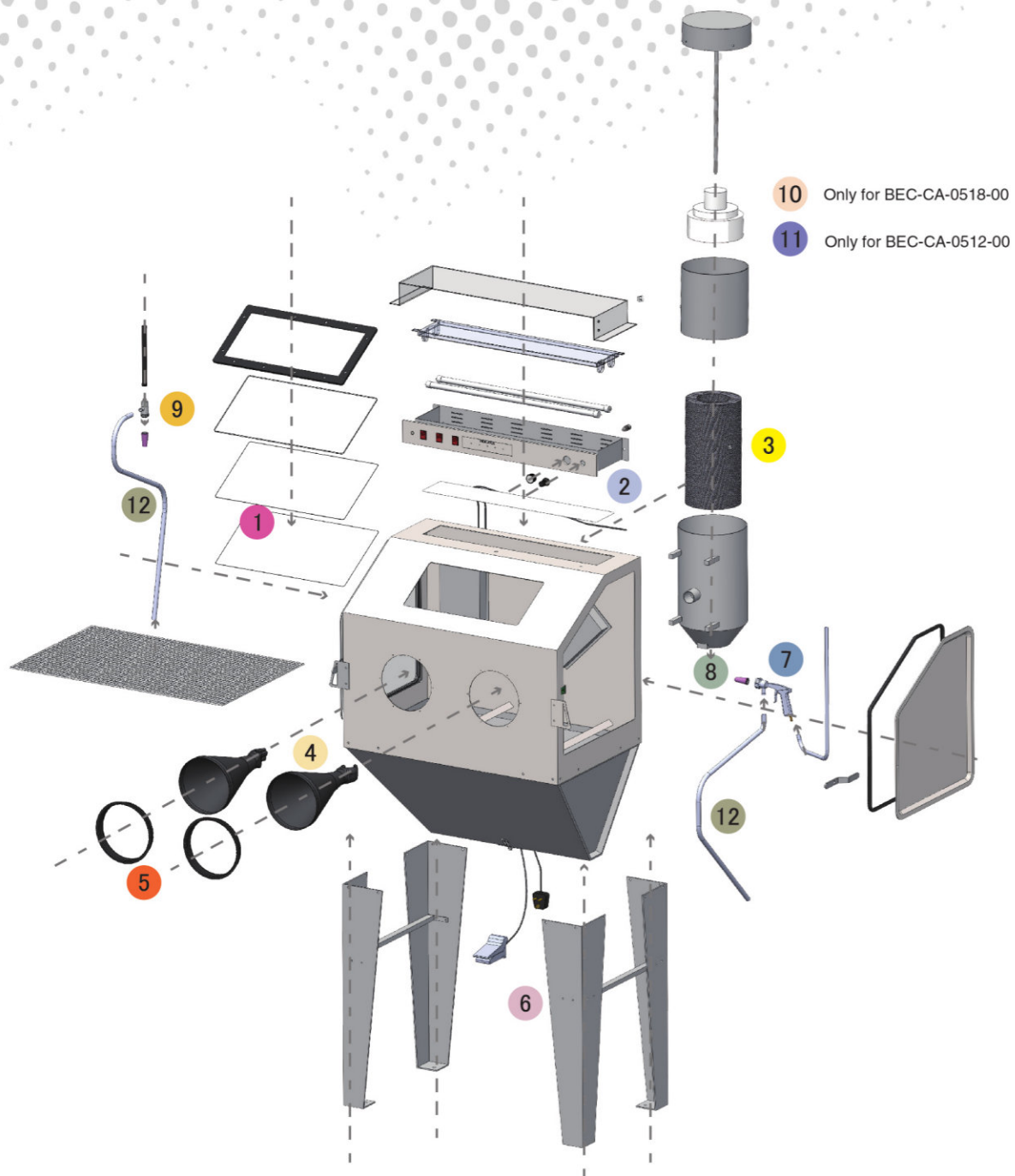
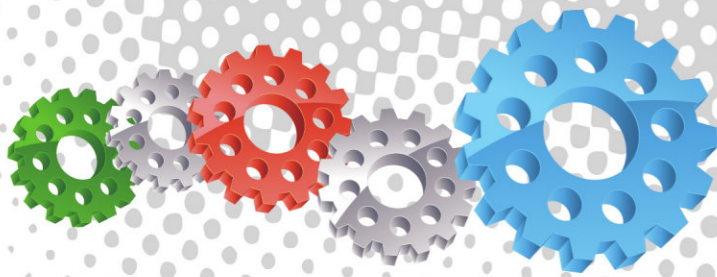
PB1500HD Blast Cabinet



Component Highlights



- | | | |
|---|---------------------------------------|--|
| 1 Integrated Control Panel | 5 Left Hand Access Door | 9 Right Hand Access Door |
| 2 Large Viewing Window With Abrasive Resistant Covers | 6 Abrasive Drain Out Port | 10 Trigger Operated Blast Gun |
| 3 Static Mounted Blast Gun | 7 Foot Pedal Operated Blasting Action | 11 Integrated Cartridge Dust Collector |
| 4 Large Operator Blasting Gloves | 8 Durable Cabinet Work Floor | 12 Dust Collector Motor & Fan Assembly |



Assemblies

Stock Code	Description	Weight
BEC-CA-0518-00	CS37 Blast Cabinet - 110VAC	105kg (231.48lbs)
BEC-CA-0512-00	CS37 Blast Cabinet - 230VAC	105kg (231.48lbs)

Optional Accessories

Stock Code	Description
BAC-BG-0120-00	CS37 Tungsten Carbide Fixed Suction Blast Gun Conversion Kit
BAC-DC-0037-01	Dust Collector Motor - 230VAC/1KW CE

Parts List

Item	Stock Code	Description	Qty
1	BAC-CA-0482-00	Window Cover	1
2	BAC-CA-0527-00	Light Window Cover	1
3	BAC-DF-0022-00	Dust Collector Filter	1
4	BAC-GL-0006-00	Cabinet Gloves	1PR
5	BAC-CA-0480-00	Glove Clamps	1
6	BAC-CA-0538-00	Electric Foot Pedal	1
7	BAC-BG-0098-00	Suction Gun Assembly w/o Nozzle & Suction Gun Barrel	1
8	BAC-NZ-0508-00	6mm Ceramic Nozzle	1
9	BAC-BG-0127-00	CS37 Fixed Gun Less Nozzle	1
10	BAC-DC-0036-00	Dust Collector Motor -110VAC	1
11	BAC-DC-0037-00	Dust Collector Motor -230VAC	1
12	BAC-CA-0507-00	Abrasives Delivery Hose	2.2M

Technical Data



- Shipping Size:**
1280mm (50") Wide 990mm (39") Deep
760mm (30") High
- Internal Size:**
940mm (37") Wide 610mm (24") Deep
575mm (23") High
- Door Size:**
500mm (20") Wide 490mm (19") High
- Air Consumption:**
8.5 L/Sec (18cfm) @ 550kPa (80psi)
- Blast Nozzle Size:**
6mm Ceramic Nozzle
- Cabinet Light:**
2 x 18 Watt 230V 50Hz
2 x 18 Watt 110V 50Hz
- Cabinet Overall Dimension:**
1040mm (41") Wide 930mm (37") Deep
1650mm (65") High
- Recommended Floor Area:**
2600mm (102") Wide 1900mm (75") Deep
- Window Size:**
575mm (23") Wide 265mm (10") High
- Air Supply Line:**
10mm (3/8")
- Electrical Power:**
1Kw 230VAC 1 Phase
1Kw 110VAC 1 Phase

