

# PB1000HD Blast Cabinet



## Product Features

The PB1000HD Heavy Duty Suction Blast Cabinet is a highly efficient, general purpose, industrial blast cabinet, compatible with a wide range of abrasive media, including:

- Chilled Iron Grit.
- Aluminium Oxide.
- Glass Beads.
- Garnet.
- Steel Grit.
- ▶ Cyclone type abrasive separator cleans the abrasive during use.
- ▶ Safety door interlock.
- ▶ Integral dry cartridge reverse pulse dust collector for clear visibility.
- ▶ Heavy duty, wear resistant rubber gloves.
- ▶ Quick-change laminated glass viewing window - no tools required.
- ▶ Fully adjustable abrasive feed tee.
- ▶ Compressed air regulator and gauge.
- ▶ High performance Delta Suction Gun.
- ▶ Air blow down gun standard.

## Common Applications

- ▶ De-scale and de-rust metal.
- ▶ Remove paint and coatings.
- ▶ Remove burrs, flashings and sand from castings and moldings.
- ▶ Decorative finishing of non-ferrous metals.
- ▶ Stone and glass etching.
- ▶ Mold cleaning.

## Complementary Products



Delta GDF Manual Gun



Delta SNH Auto Gun



Cabinet Gun Stand



Moisture Separator



Pow Air Vac



Dust Collector Silencer

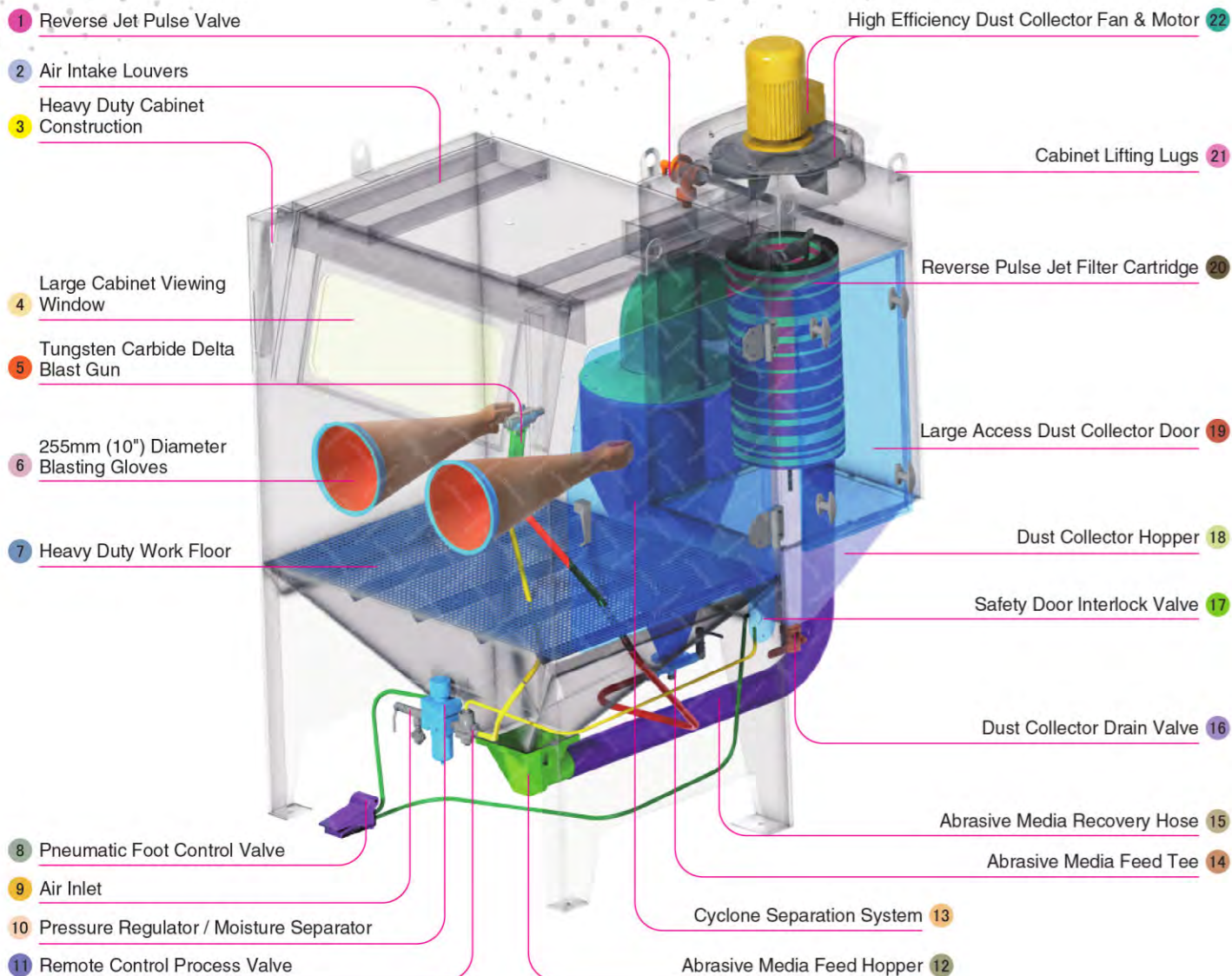
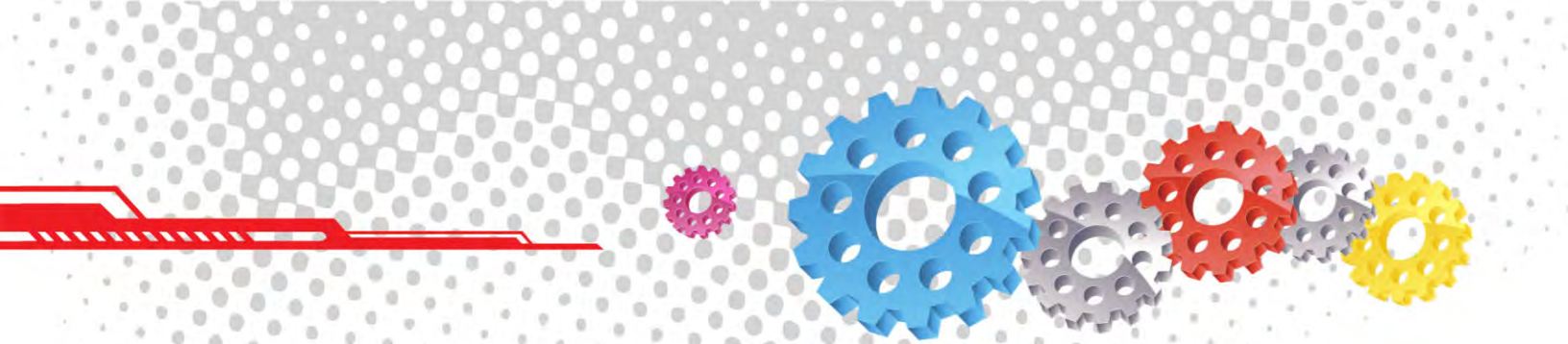


Track & Turntable



Tumble Basket



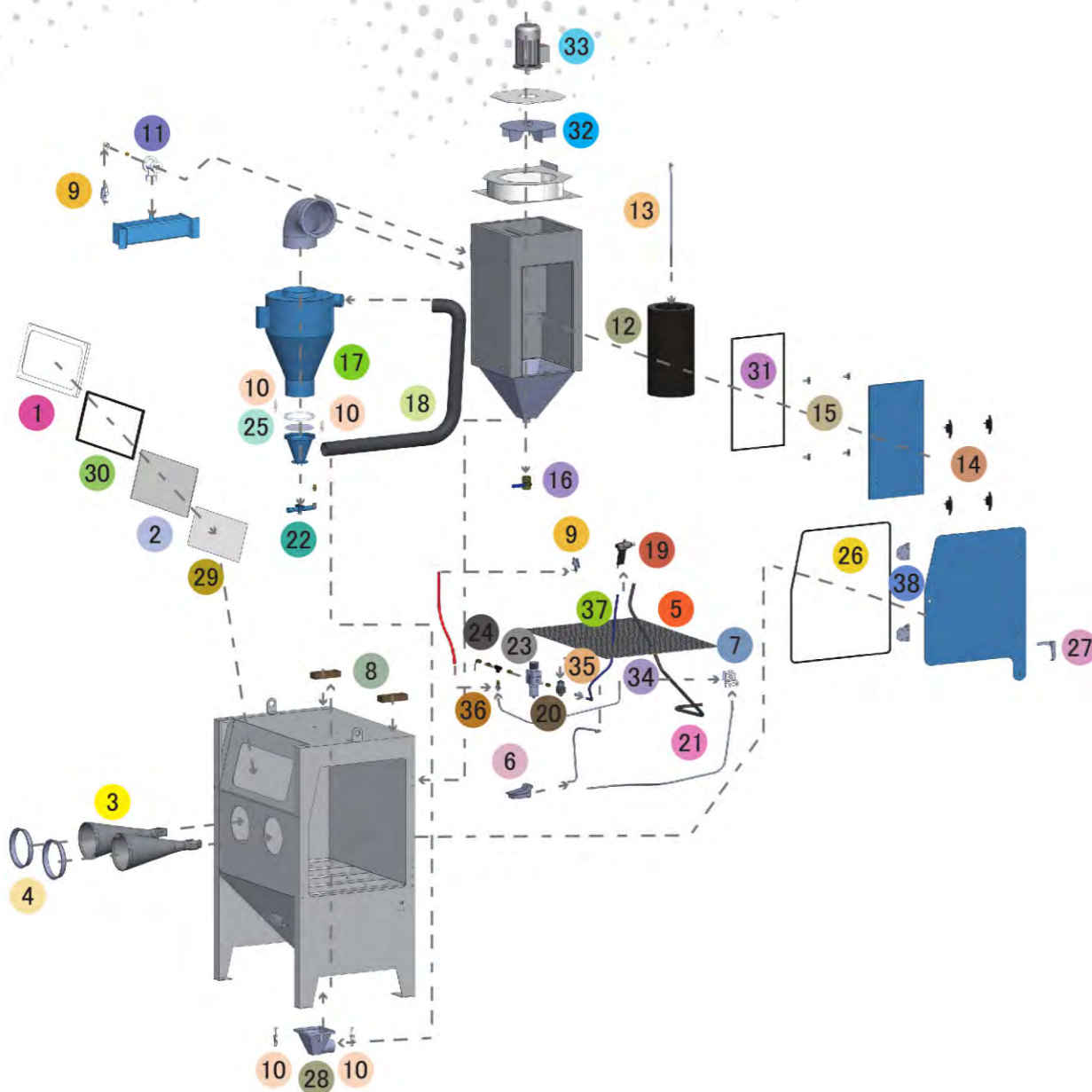
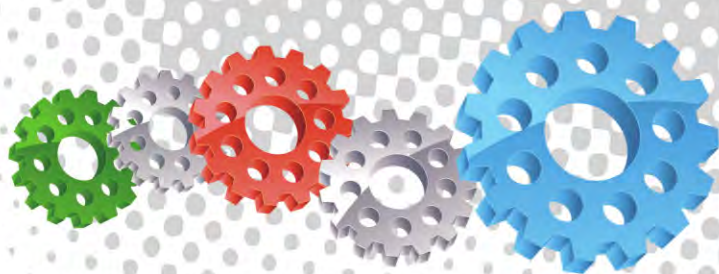


## Component Highlights



- |  |  |   |
|--|--|---|
| 1 Reverse Jet Pulse Valve              | 9 Air Inlet                                | 17 Safety Door Interlock Valve                |
| 2 Air Intake Louvers                   | 10 Pressure Regulator / Moisture Separator | 18 Dust Collector Hopper                      |
| 3 Heavy Duty Cabinet Construction      | 11 Remote Control Process Valve            | 19 Large Access Dust Collector Door           |
| 4 Large Cabinet Viewing Window         | 12 Abrasive Media Feed Hopper              | 20 Reverse Pulse Jet Filter Cartridge         |
| 5 Tungsten Carbide Delta Blast Gun     | 13 Cyclone Separation System               | 21 Cabinet Lifting Lugs                       |
| 6 255mm (10") Diameter Blasting Gloves | 14 Abrasive Media Feed Tee                 | 22 High Efficiency Dust Collector Fan & Motor |
| 7 Heavy Duty Work Floor                | 15 Abrasive Media Recovery Hose            |   |
| 8 Pneumatic Foot Control Valve         | 16 Dust Collector Drain Valve              |   |





## Assembly

Stock Code	Description	Weight
BEC-CA-0002-02	PB1000HD Blast Cabinet Assembly	520kg (1146lbs)

## Optional Accessories

Stock Code	Description	Stock Code	Description
BAC-CA-PB-0180	Track & Trolley	BAC-CA-PB-0040	Tumble Basket Ø300mm x 325mm
BAC-CA-PB-0244	Fixed Turntable Kit	BAC-CA-PB-0455	Foot Valve Guard
BAC-CA-PB-0277	Cabinet Gun Stand	BAC-CA-PB-0292	Operator Sound Kit
BAC-CA-PB-0241	Dust Collector Silencer Kit	BAC-CA-PB-0278	Rubber Lined Cabinet
BAC-CA-PB-0243	Tumble Basket Ø350mm x 375mm	BAC-DC-0002-01	Single Cartridge Auto-Reverse Pulse Kit



## Parts List

Item	Stock Code	Description	Qty
1	YAC-CA-PB-0101	Window Frame	1
2	BAC-CA-PB-0137	Rectangular Window	1
3	BAC-GL-PB-0003	10" Ø Cabinet Rubber Gloves	1PR
4	BAC-CA-PB-0157	Cabinet Entry Ring	2
5	BAC-CA-PB-0126	Cabinet Floor Mesh	1
6	BAC-CA-PB-0086	Foot Valve Spring Return	1
7	BAC-CA-PB-0087	Door Interlock Valve	1
8	BAC-CA-PB-0140	Air Entry Filter	2
9	YAC-CA-PB-0145	1/4" Blow Off Gun	2
10	YAC-FN-PB-0041	Toggle Catch	4
11	BAC-DC-PB-0007	Pulse Valve	1
12	BAC-DF-PB-0002	Filter Cartridge - Size 2	1
13	BAC-DC-PB-0031	Hanger Rod	1
14	YAC-CA-PB-0146	Handle	4
15	YAC-CA-PB-0205	Handle Tongue	4
16	BAC-PF-PB-0008	38mm (1-1/2") Ball Valve	1
17	BAC-CA-0281-04	Rubber Lined Cyclone	1
18	BAC-CA-PB-0322	Recovery Hose	1
19	BAC-BG-PB-0057	Delta-m Gun GDF 3/16 X 3/8 Assembly	1
20	BAC-RC-PB-0142	Sola5 Inlet Valve Sub Assembly	1
21	BAC-CA-0588-00	Abrasives Hose	1
22	BAC-CA-PB-0220	Feed Tee Assembly	1
23	BAC-AF-PB-0047	13mm (1/2") Filter Regulator With Gauge	1
24	BAC-PF-PB-0001	13mm (1/2") Ball Valve	1
25	BAC-CA-0353-00	Standard Cyclone Screen Seal	1
26	BAC-CA-PB-0178	Cabinet Door Seal	1
27	YAC-CA-PB-0138	Latch	1
28	YAC-CA-PB-0226	Spigot	1
29	BAC-CA-PB-0392	720 X 270 Window Cover	1
30	BAC-CA-PB-0141	Cabinet Window Seal	1
31	BAC-CA-PB-0406	Dust Collector Door Seal	1
32	YAC-CA-PB-0183	Fan Impellor – 360cfm Aluminium	1
33	YAC-CA-PB-0144	1.5kw 415v/50hz Motor	1
34	BAC-CA-PB-0135	Rubber Sealing Grommet	1
35	YAC-CA-PB-0423	16mm Grommet	1
36	YAC-CA-0477-00	Grommet	1
37	BAC-AF-PB-0164	Air Hose 10mm 250psi Impact Blue	1.5M
38	BAC-CA-PB-0296	Hinge Assembly	2

## Technical Data



- Optional Turntable Load:**  
250kg (551lbs)
- Internal Size:**  
1100mm (43") Wide 920mm (36") Deep  
890mm (35") High
- Door Size:**  
755mm (30") Wide 855mm (34") High
- Air Consumption:**  
85m³/hr (50cfm) @550kPa (80psi)
- Suction Gun / Nozzle Size:**  
BAC-BG-PB-0057 Delta Manual Gun 3/16" x 3/8"
- Cabinet Light:**  
2 x 18 Watt 230V 50Hz
- Cabinet Overall Dimension:**  
1300mm (52") Wide 1625mm (64") Deep  
2220mm (88") High
- Recommended Floor Area:**  
2900mm (114") Wide 2400mm (95") Deep
- Window Size:**  
750mm (30") Wide 300mm (12") High
- Air Supply Line:**  
13mm (1/2")
- Electrical Power:**  
1.5Kw (2hp) 415VAC 50Hz 2 Pole 3 Phase

