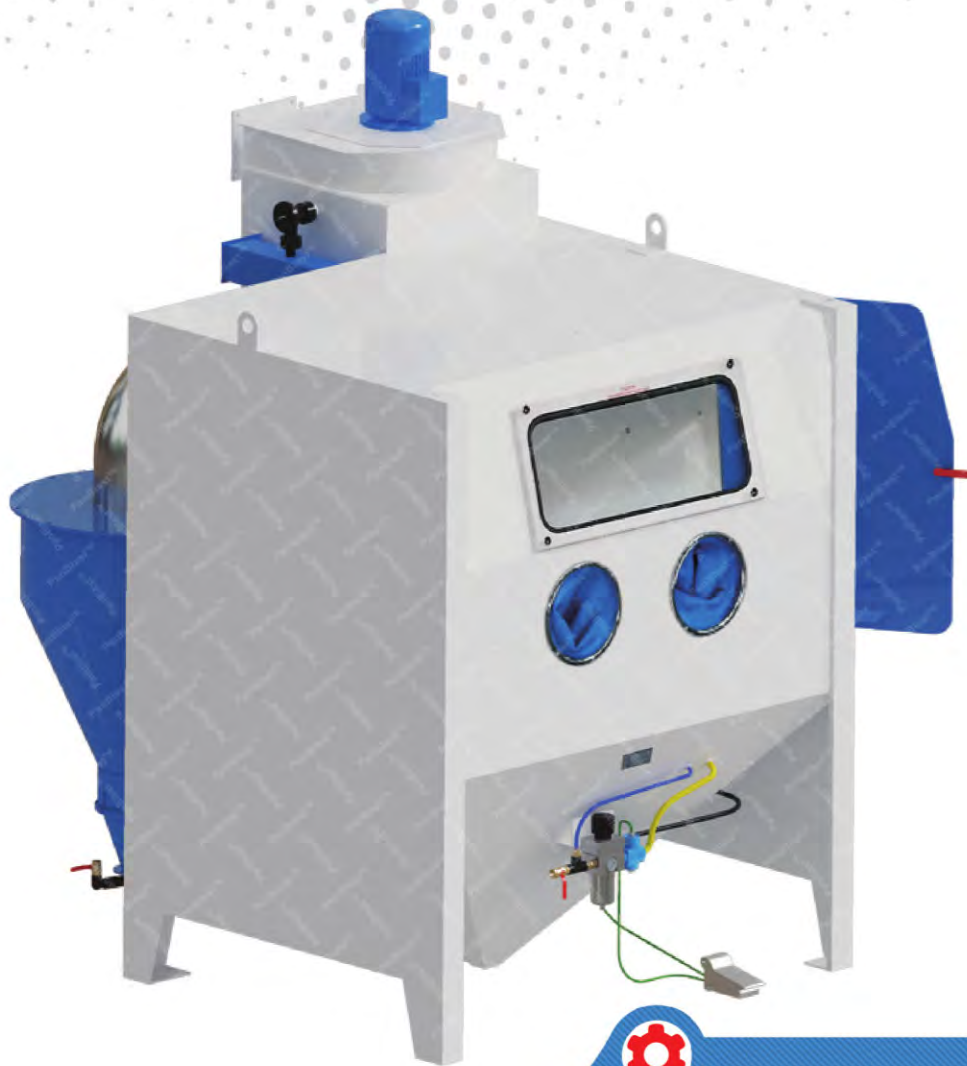


PB1500HD Blast Cabinet



Product Features

The PB1500HD Heavy Duty Suction Blast Cabinet is a highly efficient, large capacity industrial blast cabinet, compatible with a wide range of abrasive media, including:

- Chilled Iron Grit.
- Aluminium Oxide.
- Glass Beads.
- Gamet.
- Steel Grit.

- ▶ Cyclone type abrasive separator cleans the abrasive during use.
- ▶ Safety door interlock.
- ▶ Integral dry cartridge reverse pulse dust collector for clear visibility.
- ▶ Heavy duty, wear resistant rubber gloves.
- ▶ Quick-change laminated glass viewing window - no tools required.
- ▶ Fully adjustable abrasive feed tee.
- ▶ Compressed air regulator and gauge.
- ▶ High performance Delta Suction Gun.
- ▶ Standard air blow down gun.

Common Applications

- ▶ De-scale and de-rust metal.
- ▶ Remove paint and coatings.
- ▶ Remove burrs, flashings and sand from castings and moldings.
- ▶ Decorative finishing of non-ferrous metals.
- ▶ Stone and glass etching.
- ▶ Mold cleaning.

Complementary Products



Delta GDF Manual Gun



Delta SNH Auto Gun



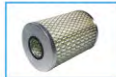
Delta SNH Manual Gun



Delta GDF Auto Gun



Pow Air Vac



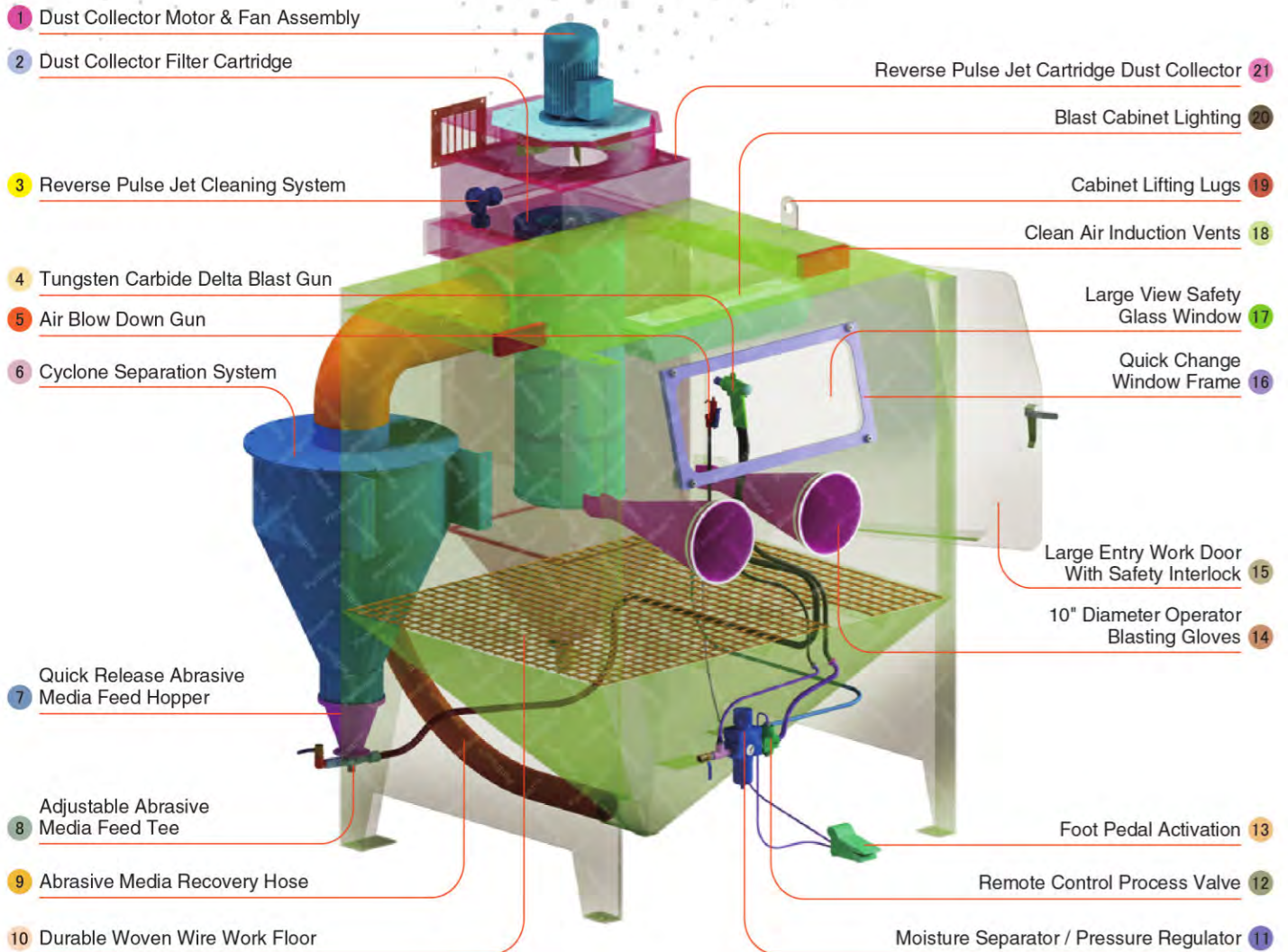
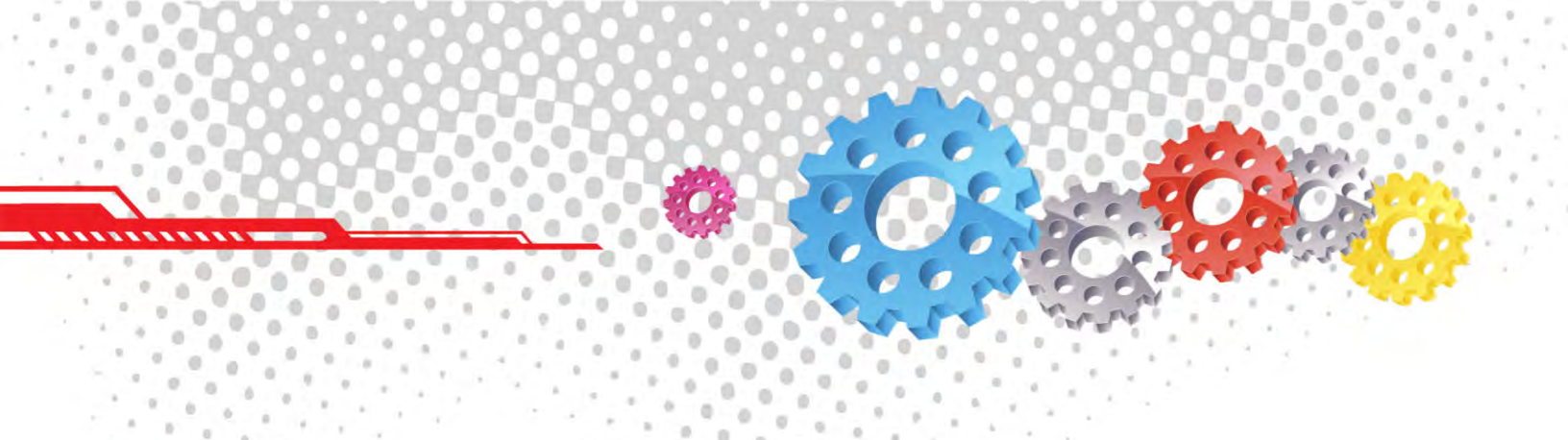
Filter Cartridge



Moisture Separator



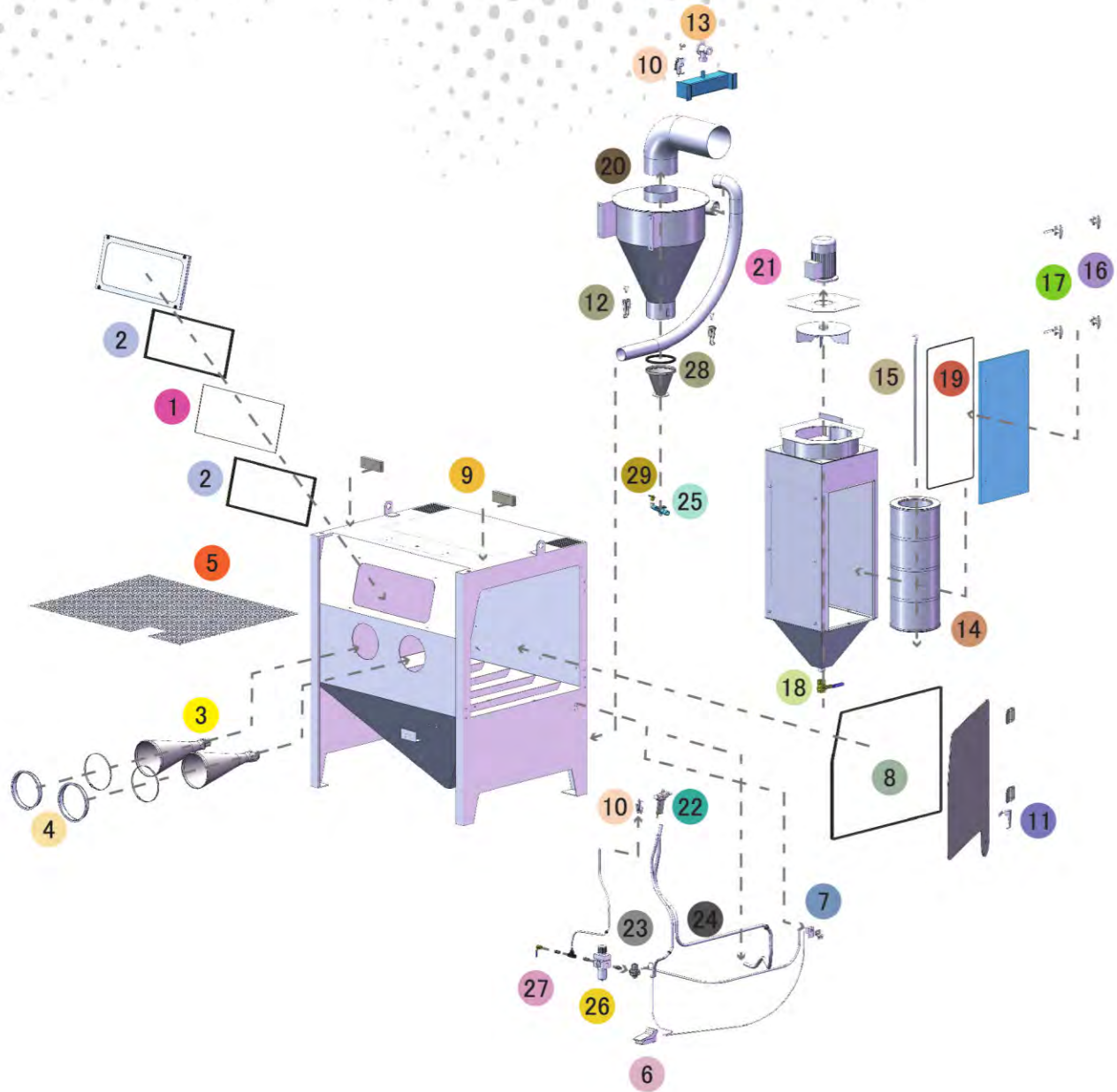
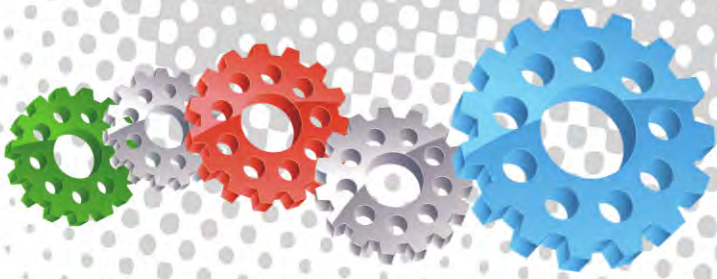
Cabinet Window Cover



Component Highlights



- | | | |
|--|--|--|
| 1 Dust Collector Motor & Fan Assembly | 8 Adjustable Abrasive Media Feed Tee | 15 Large Entry Work Door With Safety Interlock |
| 2 Dust Collector Filter Cartridge | 9 Abrasive Media Recovery Hose | 16 Quick Change Window Frame |
| 3 Reverse Pulse Jet Cleaning System | 10 Durable Woven Wire Work Floor | 17 Large View Safety Glass Window |
| 4 Tungsten Carbide Delta Blast Gun | 11 Moisture Separator / Pressure Regulator | 18 Clean Air Induction Vents |
| 5 Air Blow Down Gun | 12 Remote Control Process Valve | 19 Cabinet Lifting Lugs |
| 6 Cyclone Separation System | 13 Foot Pedal Activation | 20 Blast Cabinet Lighting |
| 7 Quick Release Abrasive Media Feed Hopper | 14 10" Diameter Operator Blasting Gloves | 21 Reverse Pulse Jet Cartridge Dust Collector |



Assembly

Stock Code	Description	Weight
BEC-CA-PB-0007	PB1500HD Blast Cabinet Assembly	690kg (1521lbs)

Optional Accessories

Stock Code	Description	Stock Code	Description
BAC-CA-PB-0212	Track & Trolley	BAC-CA-PB-0455	Foot Valve Guard
BAC-CA-PB-0243	Tumble Basket Ø350mm x 375mm	BAC-CA-PB-0292	Operator Sound Kit
BAC-CA-PB-0040	Tumble Basket Ø300mm x 325mm	BAC-CA-PB-0241	Dust Collector Silencer Kit
BAC-CA-PB-0244	Fixed Turntable Kit	BAC-CA-PB-0279	Rubber Lined Cabinet Kit
BAC-CA-PB-0277	Cabinet Gun Stand	BAC-DC-0002-01	Single Cartridge Auto-Reverse Pulse Kit

Parts List

Item	Stock Code	Description	Qty
1	BAC-CA-PB-0137	Rectangular Window	1
2	BAC-CA-PB-0141	Cabinet Window Seal	2
3	BAC-GL-PB-0003	10" Ø Cabinet Rubber Gloves	1PR
4	BAC-CA-PB-0157	Cabinet Entry Ring	2
5	BAC-CA-PB-0318	Cabinet Floor Mesh	1
6	BAC-CA-PB-0086	Foot Valve Spring Return	1
7	YAC-CA-PB-0219	Door Interlock Valve	1
8	BAC-CA-PB-0319	Cabinet Door Seal	1
9	BAC-CA-PB-0324	Air Entry Filter	2
10	YAC-CA-PB-0145	1/4" Blow Off Gun	2
11	YAC-CA-PB-0138	Latch	1
12	YAC-FN-PB-0041	Toggle Catch	2
13	BAC-DC-PB-0007	Pulse Valve	1
14	BAC-DF-PB-0005	Filter Cartridge - Size 3	1
15	BAC-DC-PB-0032	Hanger Rod	1
16	YAC-CA-PB-0146	Handle	4
17	YAC-CA-PB-0205	Handle Tongue	4
18	BAC-PF-PB-0008	38mm (1-1/2") Ball Valve	1
19	BAC-CA-PB-0436	Dust Collector Jumbo Door Seal	1
20	BAC-CA-PB-0282	PB1500HD Rubber Lined Cyclone	1
21	BAC-CA-0599-00	Recovery Hose	1
22	BAC-BG-PB-0057	Delta-M Gun GDF 3/16 X 3/8 Assembly	1
23	BAC-RC-PB-0142	Sola 5 Inlet Valve Sub Assembly	1
24	BAC-CA-0589-00	Abrasives Hose	1
25	BAC-CA-PB-0220	Feed Tee Assembly	1
26	BAC-AF-PB-0047	13mm (1/2") Filter Regulator With Gauge	1
27	BAC-PF-PB-0001	13mm (1/2") Ball Valve	1
28	BAC-CA-0353-00	Standard Cyclone Screen Seal	1
29	YAC-PF-PB-0026	PVC 1/2" Ball Valve	1

Technical Data



- Optional Turntable Load:**
 250kg (551lbs)
- Internal Size:**
 1400mm (55") Wide 1180mm (47") Deep
 1040mm (41") High
- Door Size:**
 1055mm (42") Wide 855mm (34") High
- Air Consumption:**
 85m³/hr (50cfm) @ 550kPa (80psi)
- Suction Gun / Nozzle Size:**
 BAC-BG-PB-0057 Delta Manual Gun 3/16" x 3/8"
- Cabinet Light:**
 2 x 36 Watt 230V 50Hz
- Cabinet Overall Dimension:**
 1580mm (63") Wide 1968mm (78") Deep
 2350mm (93") High
- Recommended Floor Area:**
 3500mm (138") Wide 2700mm (106") Deep
- Window Size:**
 750mm (30") Wide 300mm (12") High
- Air Supply Line:**
 13mm (1/2")
- Electrical Power:**
 1.5Kw (2hp) 415VAC 50Hz 2 Pole 3 Phase

